


Rail Unleashed: Navigating the future of ESG

Joe Docherty

Amey



**Prioritisation of ESG
critical and progressive,
but daunting – how do
we all become experts?**

- INSERT VIDEO

<https://vimeo.com/918278728/abb965e97f>

Transport Scotland

- North Lanarkshire APS
- TS Operations & Infrastructure Services
- Trunk Roads NMC S/W
- Trunk Roads NMC N/E
- M8 Motorway
- Major Projects Framework (MTRIPS)
- A96 Dualling

North Lanarkshire Council

- Ravenscraig North
- Ravenscraig South
- Amey Public Services LLP

Edinburgh Airport

- (HAL)

Scotland Excel Engineering & Technical Consultancy

- All 32 Local Authorities
- Design services provided to 16/32 Local Authorities

AmeyBriggs

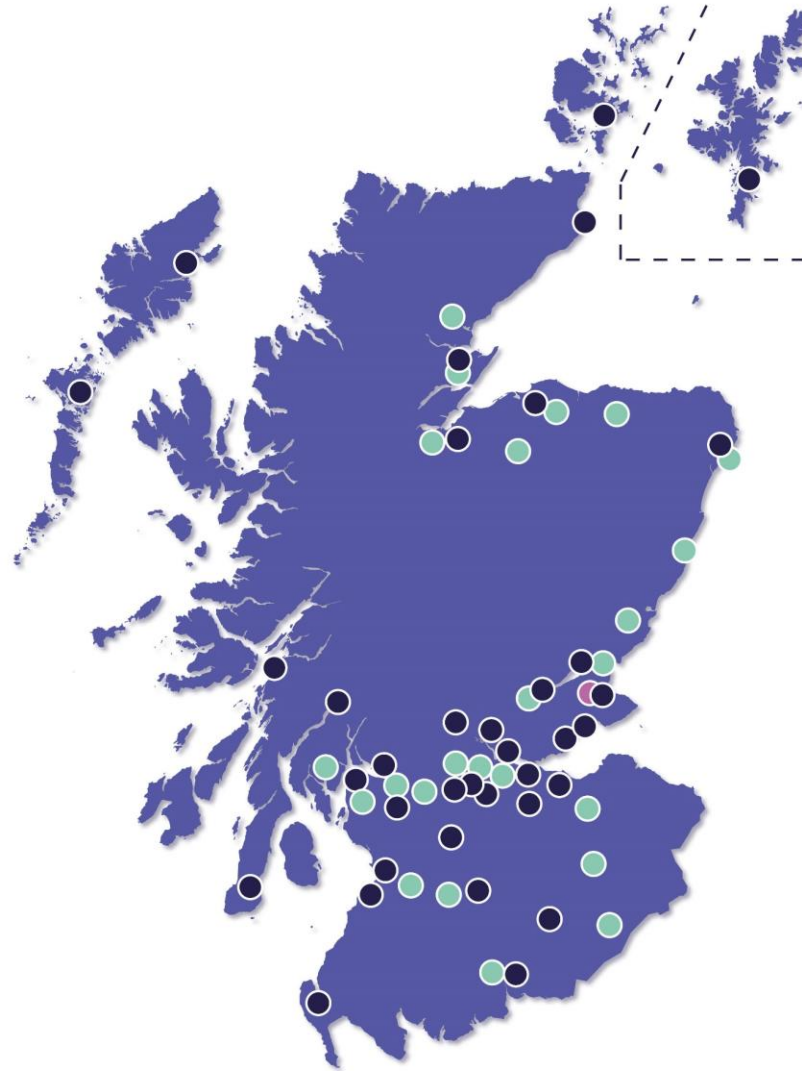
- Leuchars

CEFA

- (Rail)

GEOAmey

- (Criminal Justice)



Levenmouth Active Travel Scheme(s)

Longest active travel project in Scotland
(Fife Council)

Glasgow Airport Investment Area & Paisley Link Road

(Renfrewshire Council)

Bridge Assessments

(Aberdeenshire Council)

A701 Transport Corridor

(Midlothian Council)

Active Travel Bridge Assessment

(Moray Council)

Structures & Geotech Assessments

(Perth & Kinross Council)

Edinburgh Schools

Clackmannanshire Schools

Dumfries & Galloway Schools

Glasgow Schools

Scottish Borders Schools

Renfrewshire Schools

MOD Defence Housing

The three key goals we are taking forward, contributing to sustainable development.



Amey's core contribution to the UN Sustainable Development Goals are SDG 9 and SDG 11.

Given the range of our activities we also contribute to other goals.



ENVIRONMENT

Accelerate the change to a resilient and low carbon future

Decarbonisation and energy efficiency

Nature positive

Infrastructure resilience

Net Zero organisation



SOCIAL

Enhance the wellbeing of people and communities we impact

Investing in our people

Creating opportunities

Sustainable supply chain

Involved communities



GOVERNANCE

Achieve sustainable and responsible growth

Governance

Transparency and partnership

Ethics and compliance

Risk management



Navigating the Future of ESG

- Multi-nationals can be local
- Local solutions created by local people
- Collaborative local partnerships
- Challenge ourselves to look at the whole system
- Giving back in the right way – what is value for money?

ESG in the development of smart electrification

- How do you build and develop the railway network sensitively and appropriately?
- How do you look after the whole community when we're working on heritage structures?
- How do we leave a positive legacy?



Maximo implementation

- Collaboration with Network Rail and Transport for Wales to develop architecture for new system
- One unified, web-based asset information system maximises visibility and prompt issue resolution



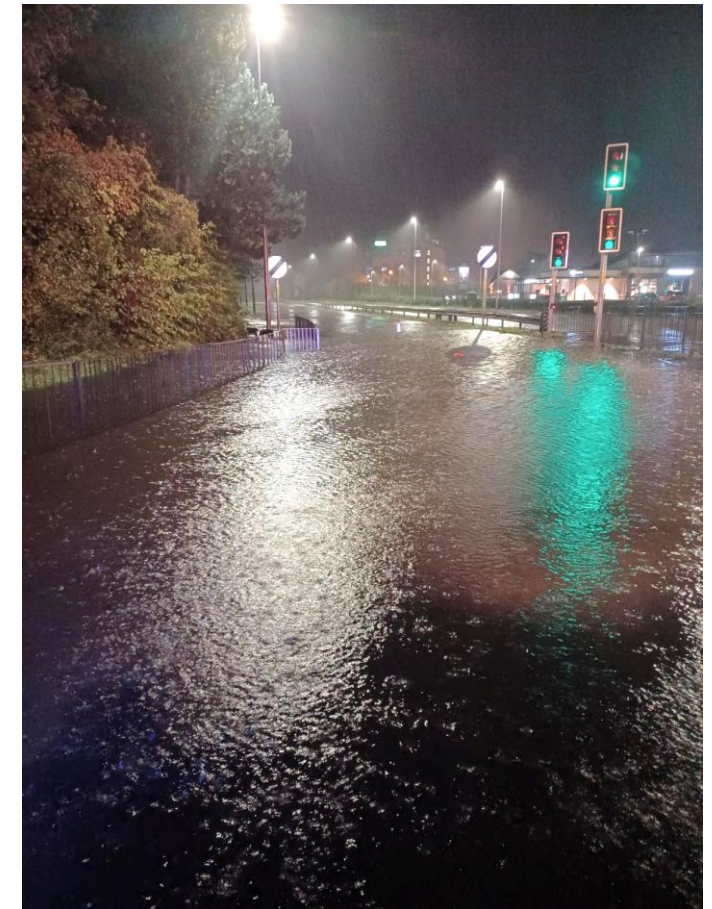
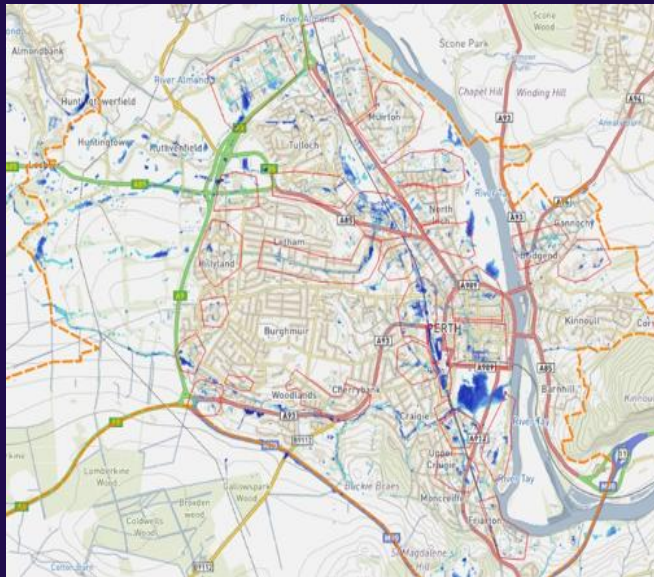
Customised analytics

- Introducing best practice from across the UK and the world to combine asset management activity for tram and track
- Maximising tram maintenance regimes
- Tram data for overhead line inspections



Perth Surface Water Management Plan

- To reduce potential risks and eventual damages arising from extreme rain events
- Use of latest 2Di model to understand how and where overland flow paths are created



Total Social Value created in 2023

Over £24m

• Supply Chain

- Over £18m spent with Small Medium Enterprises
- 57% of supply chain are SMEs
- Doubled our spend with social enterprises

Headstart



- 6 month paid internship
- Continuation of DWP's Kickstart programme
- Long-term unemployed
- Started in Dumfries and Galloway

Employment

- 203 weeks of work experience provided
- 9,600 hours of training delivered
- 34 apprentices joined
- Approximately 30% of Scotland-based employees identify as female

Skills based volunteering

- New garden at Troqueer Primary School
- Installed lighting for Stranraer Oyster Festival



Community Benefits

- Over 200 Social Impact Days
- 285 hrs spent on environmental volunteering
- 940 beneficiaries of education outreach activities

Thank you

Joe Docherty
HSEQ Director

Joseph.Docherty@amey.co.uk