

# Derby Homes – Retrofitting Council Housing in Derby

**Shaun Bennett**  
**Director of Property**











Television antenna

Window

Window

Window

Window

Small arched window

Window

Window

Small arched window

Window

Window

Window

Window

Small arched window

Small arched window

Small arched window

CP07 AYK



494



314

314



©2017 Google



Rainham Gardens



©2017 Google

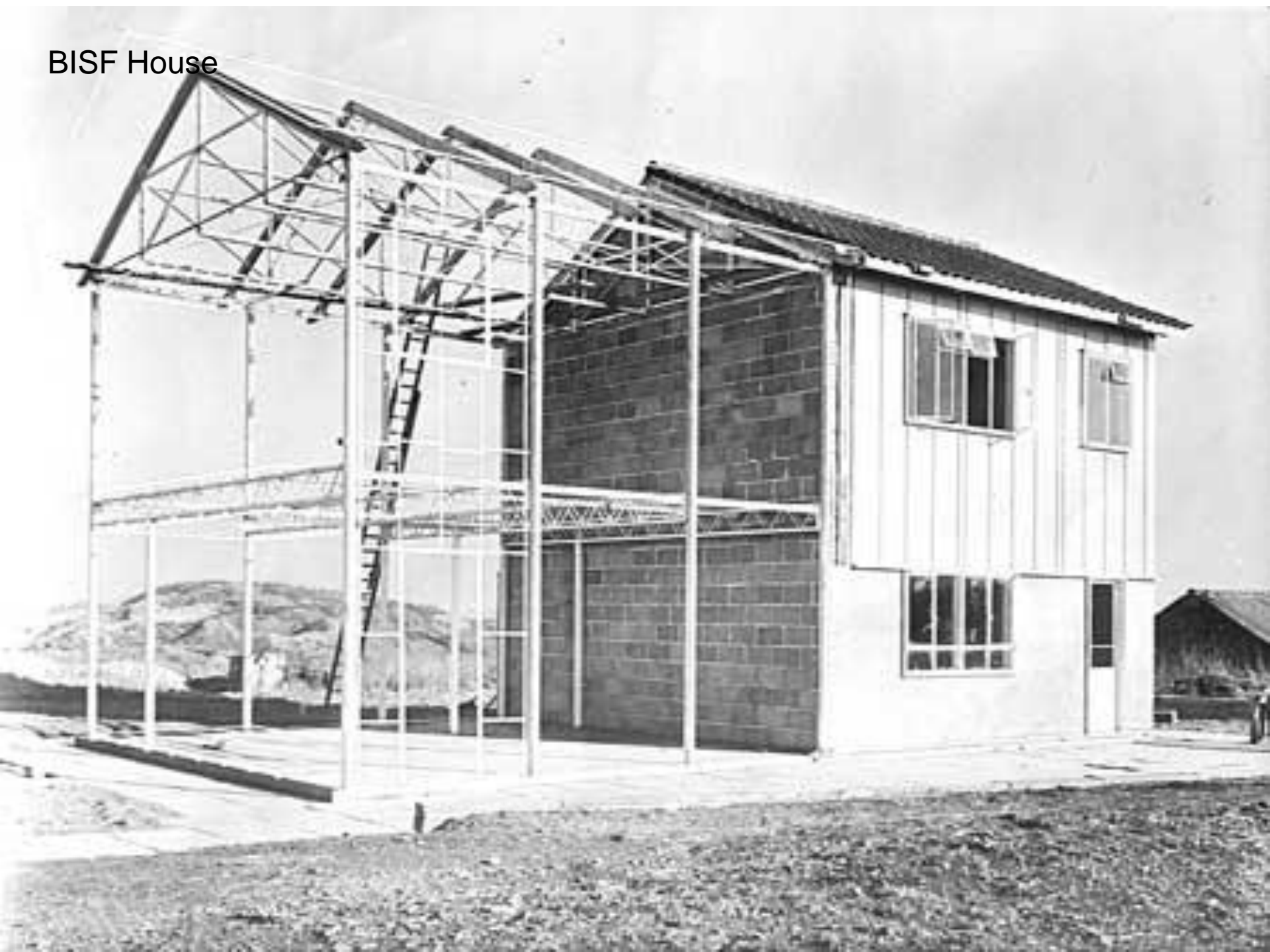
Hawkesley Bungalow



Airey House



BISF House







STOPPING

© 2017 Google

© 2017 Google



# Impact for customers and the environment

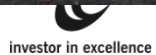
- Completed almost all thermal improvements
- Integration within planned maintenance
- SAP from 40 to 76 over 30 years
- In today's money saved on average £900 per home per year
- £12m per year saved by tenants



# Cost of living crisis

- 30 years worth of energy savings wiped out already
- The dreaded direct debit email
- Standing charges and fuel poverty
- Covid/COP26 – Impact on global gas prices
- Don't invest to regret – carbon v running costs





HouseMark  
Quality for Social Landlords  
Quality and Performance Group

[www.derbyhomes.org](http://www.derbyhomes.org)



HouseMark  
Mark for Social Landlords  
Only with Responsible Office

