

# Metro in Wales: Arcadis Perspective



September 2020

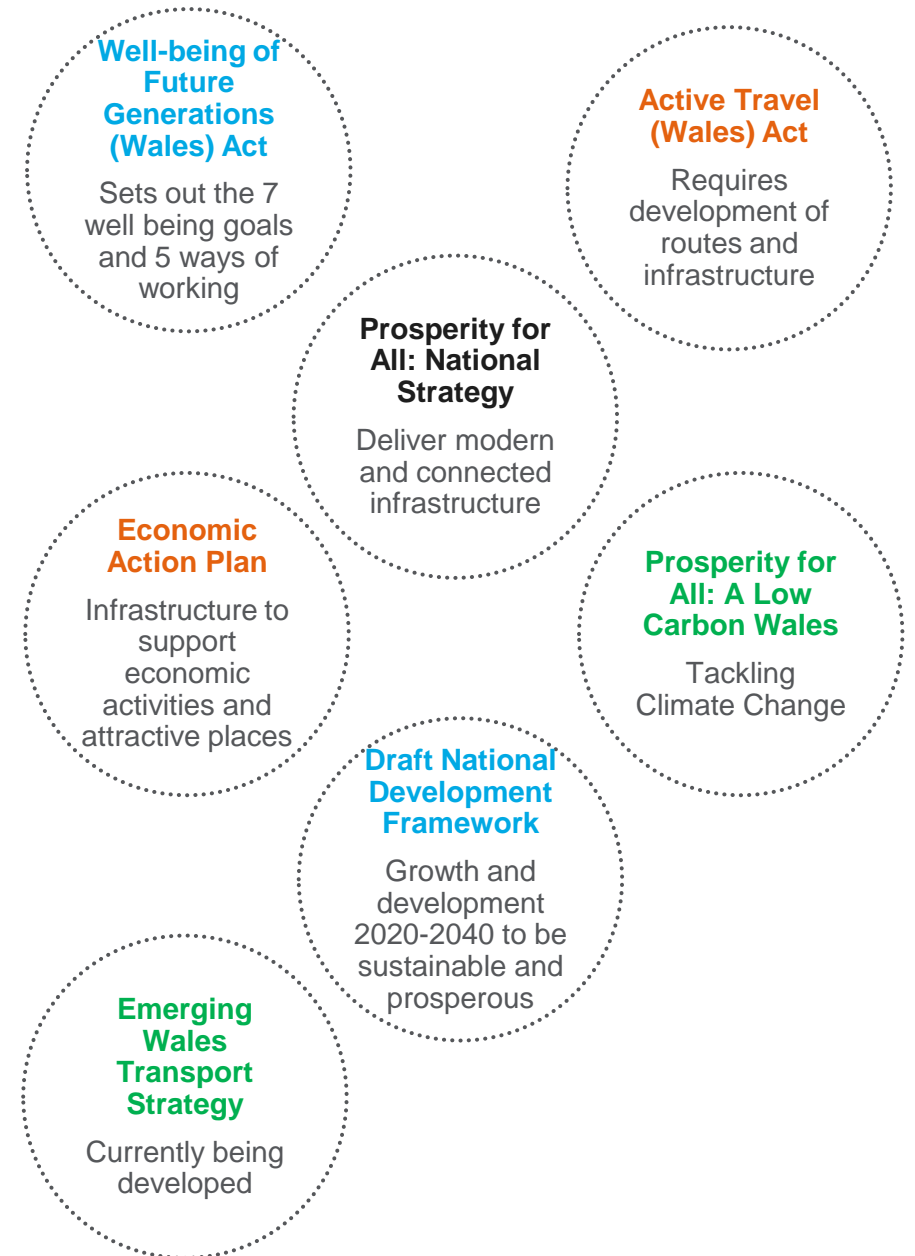
## Clear legislative and policy framework, working towards:

- Well-being for future generations – consideration of social, environmental and economic sustainability
- An integrated transport network and supports economic growth and attractive places to live, work and learn
- Facilitating people to travel actively
- Reducing the carbon impacts of transport and tackling climate change

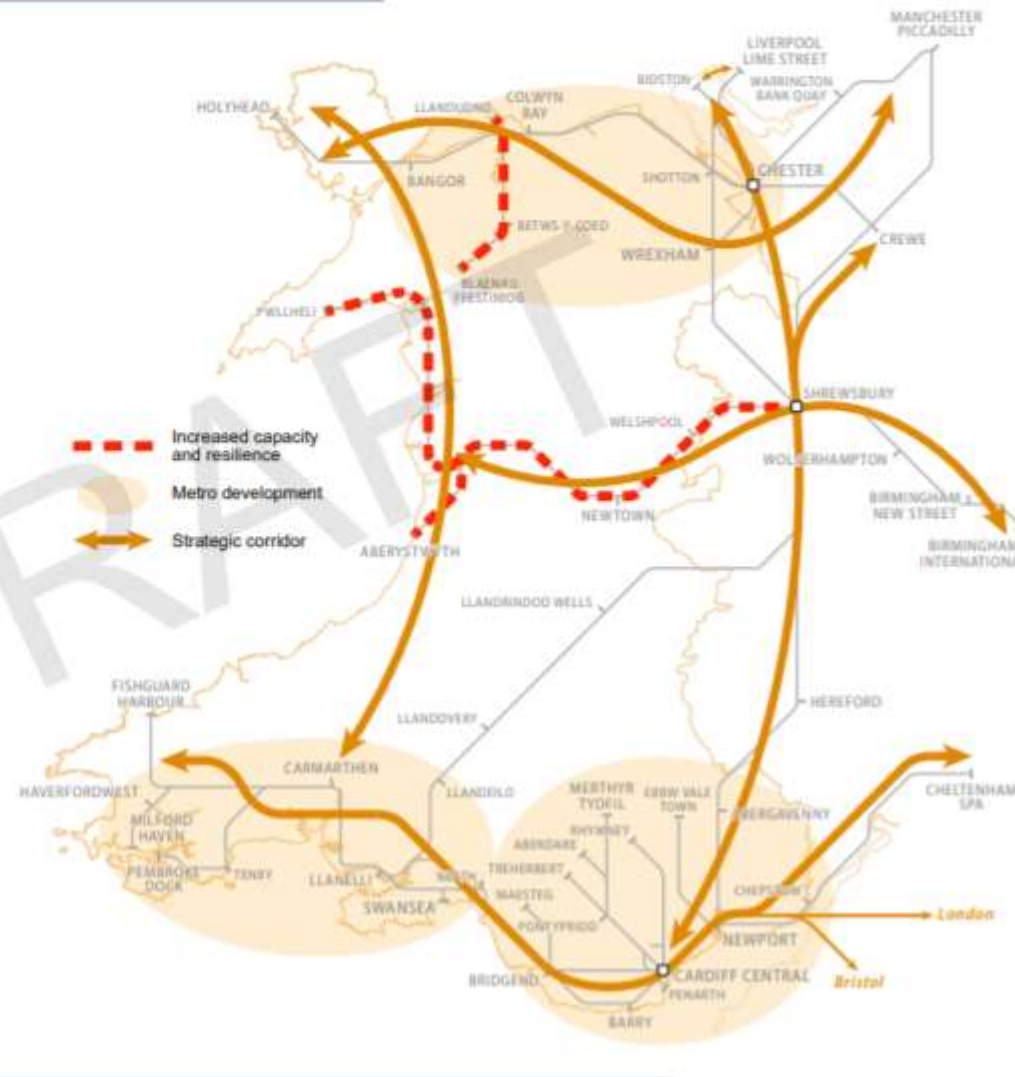
## Emerging National Strategies:

- Draft **National Development Framework** laid before the Senedd
- Draft updated **Wales Transport Strategy** in preparation

*Arcadis has prepared the Integrated Sustainability Appraisals for both key documents*

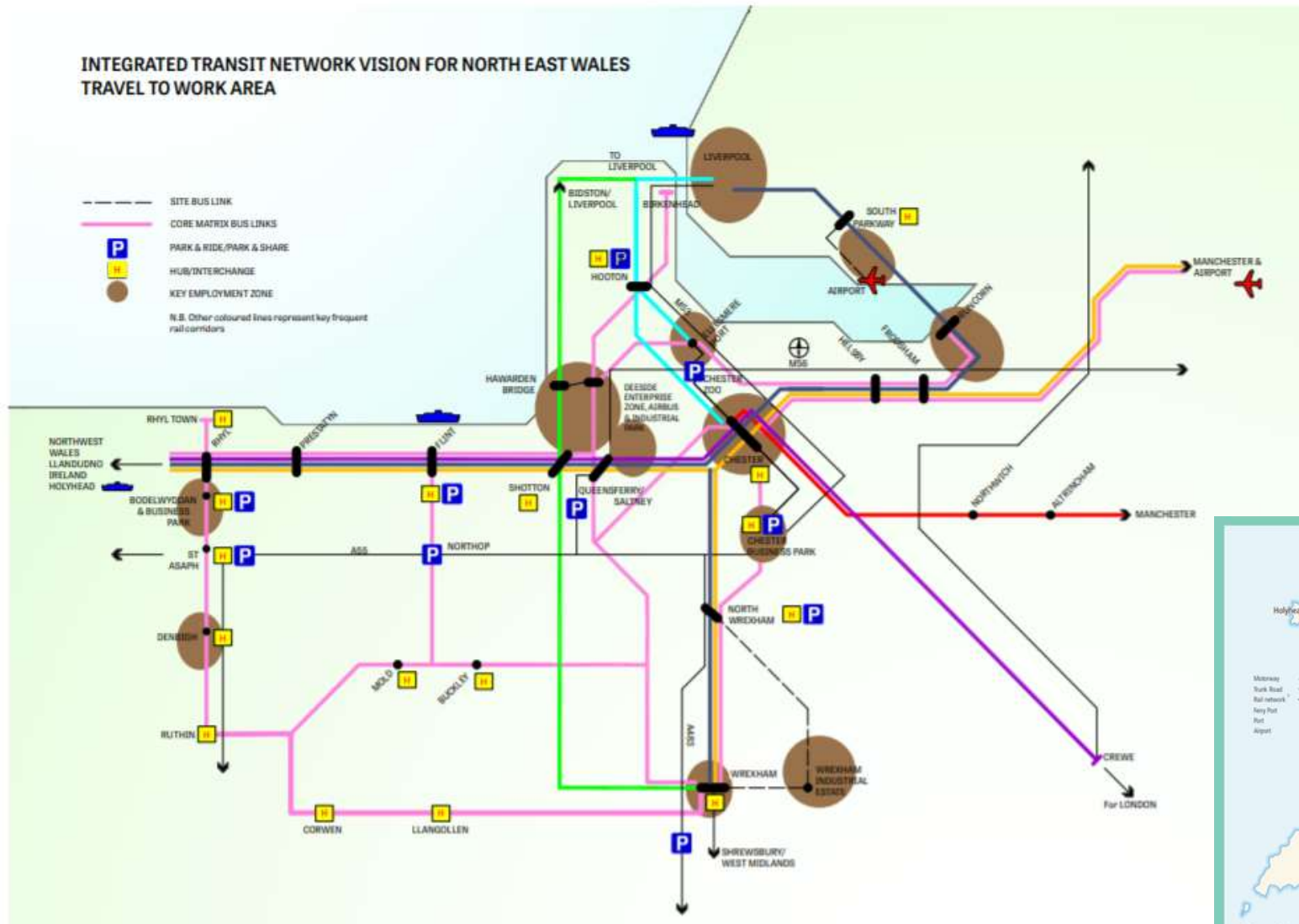


## Strategic Corridors and Metro Developments



- Integrated approach to growth and infrastructure planning
- North, South East and South Wales Metros
- North Metro covers the whole of the 6 authorities of North Wales
- Wrexham and Deeside is National Growth Area
- North Wales Coast is Regional Growth Area

# North Wales Metro



- Moving North Wales Forward – 2017 Vision for North Wales Metro (Welsh Government)
- Integrated network of rail, bus, park and ride, interchange hubs with key employment areas
- Now emerged into the Metro for the whole of North Wales – an holistic and integrated approach



Source: NE Wales Integrated Task Force

## Draft National Development Framework – September 2020: Policy 23 North Wales Metro

*The Welsh Government supports the development of the North Wales Metro and will work with Transport for Wales, local authorities and other partners to enable its delivery and maximise associated opportunities.*

*The Welsh Government will work with local and regional authorities in North Wales and the North West of England to ensure the Metro and wider transport investments strengthen cross-border transport connections with improved transport links between the North, Chester, Liverpool and Manchester.*

*Strategic and Local Development Plans must support the North Wales Metro. Planning authorities should plan growth and regeneration to maximise the opportunities arising from better regional and cross border connectivity, including identifying opportunities for higher density, mixed-use and car-free development around new and improved metro stations.*

Source: Welsh Government, September 2020





**“In the coming years Transport for Wales will be improving and enhancing the transport network in North Wales as we work together with partners to deliver the Welsh Government’s vision for the North Wales Metro and create an integrated transport network for the whole of Wales. Our North Wales Business Unit will play an important part in ensuring that it meets local and regional needs”**

**Lee Robinson,**

**TfW’s Development Director for North Wales**

## Deeside Parkway Station

- New station to serve Deeside EZ
- Outline Business Case & GRIP3 design
- Welsh Govt bid to DfT New Stations Fund

## Wrexham Industrial Estate Sustainable Travel

- 2nd largest industrial estate in the UK with 10,000 jobs
- Sustainable travel strategy: active travel links, bus services, HGV parking, estate improvements



Source: TfW Route Map





## Strategic Case

- The case for change, fit with policies and well-being objectives

## Transport Case

- Does the proposal offer good public value for money and maximise contribution to the well-being goals?

## Financial Case

- Is the proposed spend affordable?

## Commercial Case

- How can the scheme be procured, is it viable?

## Management Case

- Is the scheme achievable?  
Can it be delivered?