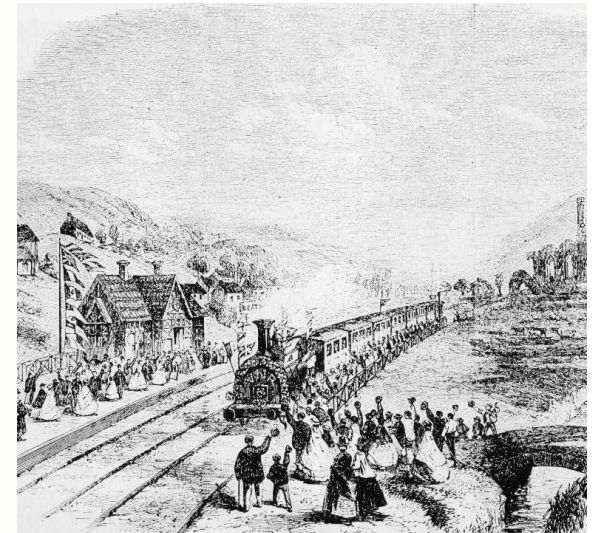


Councillor Anthony Taylor

Deputy Leader of Neath Port Talbot  
County Borough Council





# History of Local Railway





# Port Talbot Parkway Station





# Integrated Transport Hub





# Police Station Redevelopment



Neath Port Talbot Group College programmed development 2019/20

NPTC Group of Colleges is one of the largest Further Education providers in Wales with nine campuses stretching from south to north Wales. The new campus on Harbourside will be home to over 1,000 students.



NPTC Group of Colleges Harbourside Campus

Former Magistrates Court refurbishment

8,000 sq ft refurbishment due for completion January 2019 to establish a technology and software cluster. An award winning high growth software technology business has been secured for this development.



Former Magistrates Court refurbishment

# Neath Port Talbot Group College

# Former Magistrates Court Refurbishment





- Baglan Energy Park
- Harbourside
- Port Talbot Docks
- Baglan Industrial Estate
- Tata Steel UK

# Enterprise Zones





# Harbourside Park







Plot Number	Acres	Hectares
1	42.69	17.28
2	60.56	24.51
3	56.27	22.77
4	6.40	2.59
5	5.91	2.39
6	42.97	17.39
	<b>214.80</b>	<b>86.93</b>

# Potential Regeneration of Port Talbot Docks



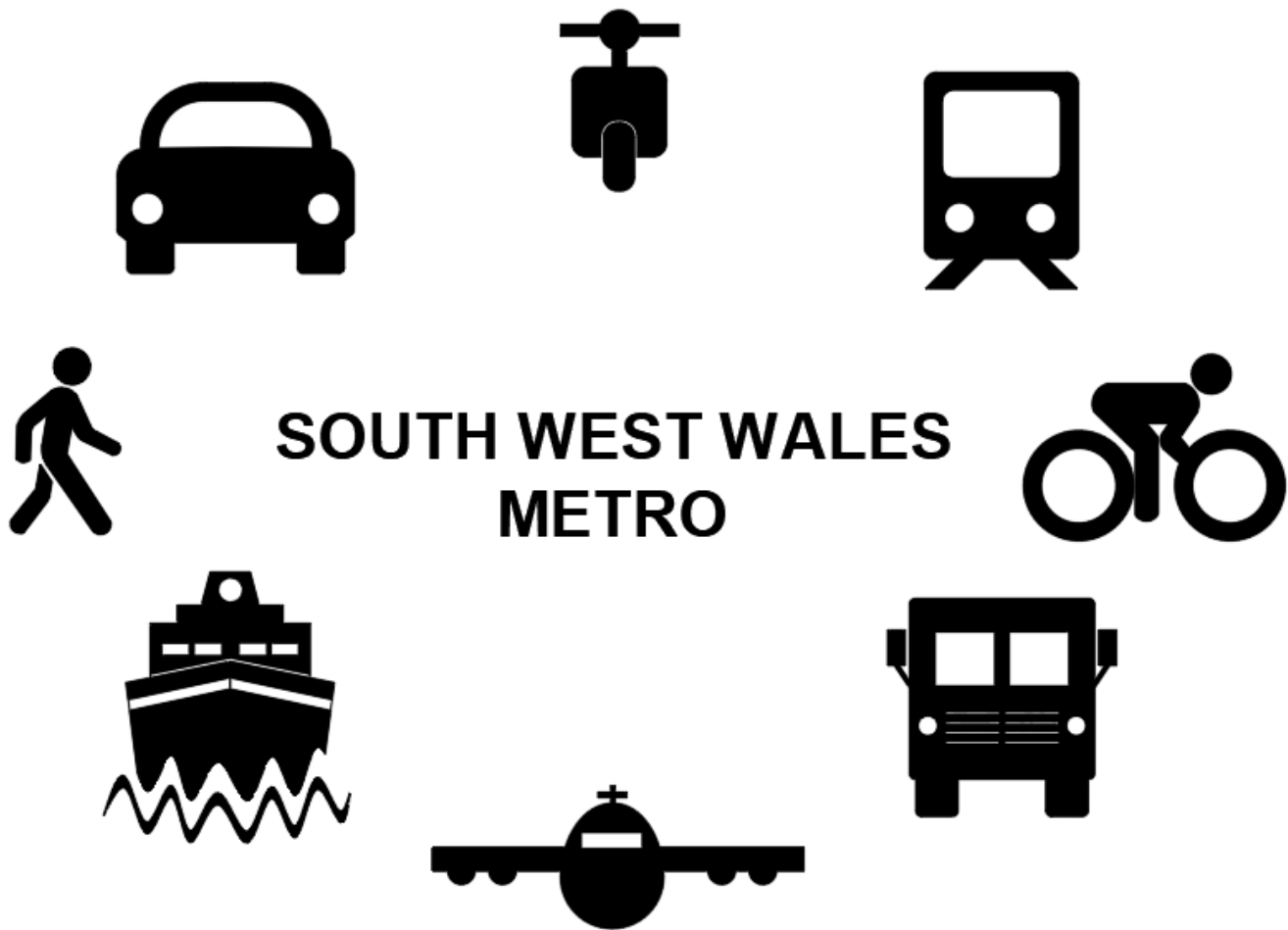
# Bargen Ddinesig Bae Abertawe Swansea Bay City Deal



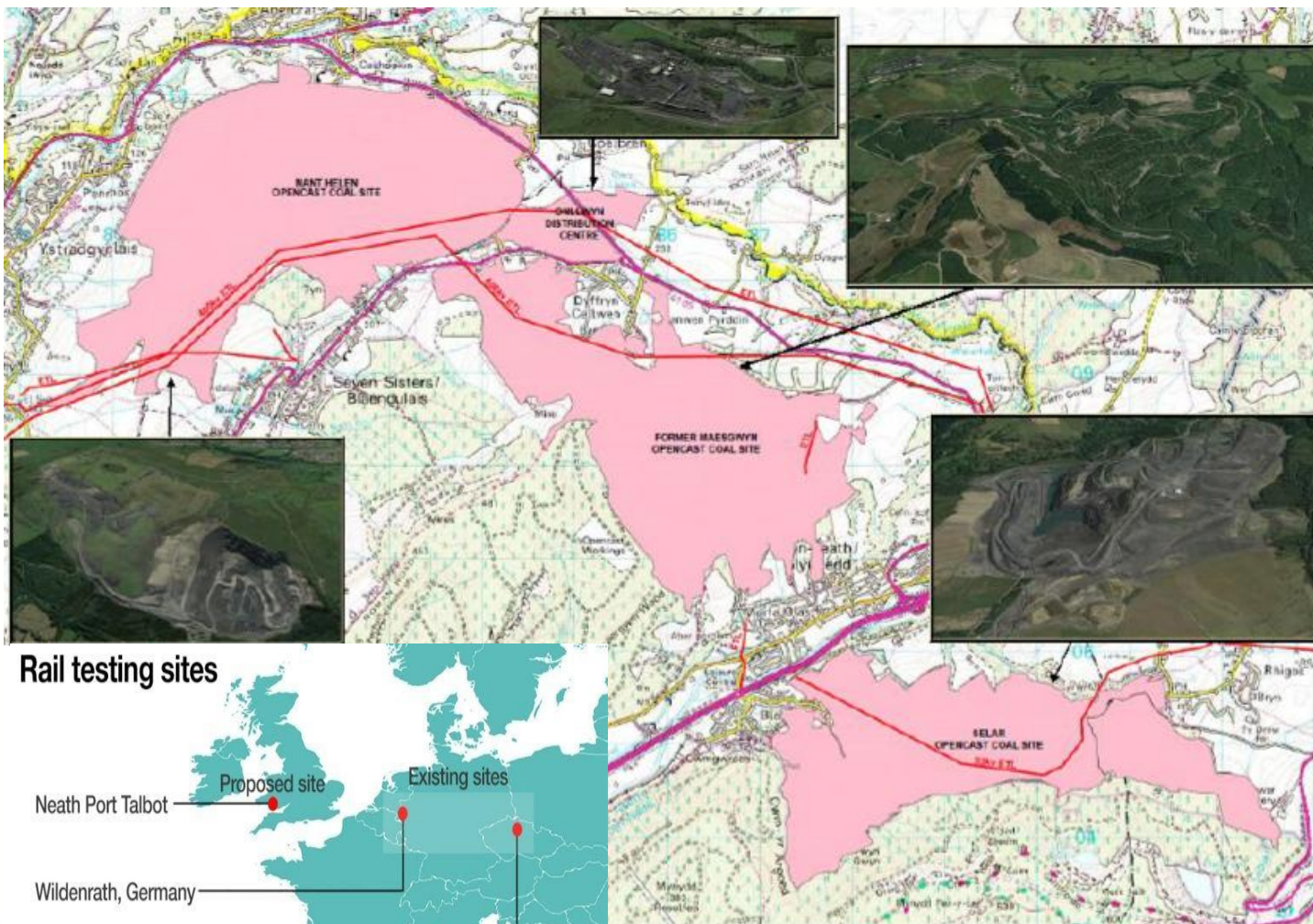
## Swansea Bay City Deal



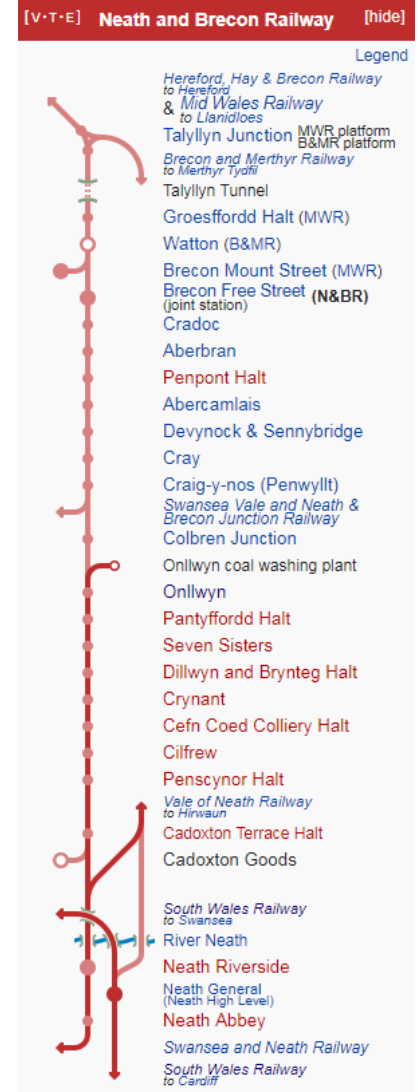




South West Wales Metro



BBC



# Wales Global Centre of Rail Excellence





Any questions?

