



Delivering a world class transport network for Wales

Social and Economic Impact of Infrastructure Projects



Balfour Beatty

Welcome



Aaron Reid

Head of Sustainable Procurement

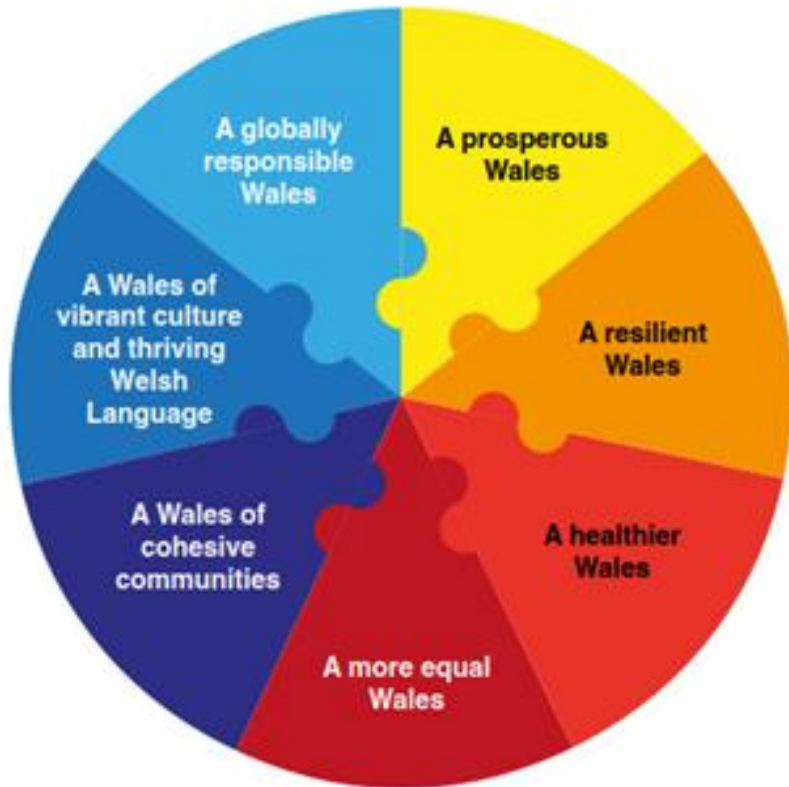
Sustainable procurement specialist who has gained valuable insights from working at the cutting-edge of the agenda in both the public and private sectors.

Aaron joined Balfour Beatty in 2012 and is responsible for Balfour Beatty's sustainable procurement strategy and its award-winning supplier diversity programme.

Aaron also sits on CITB's Fairness Inclusion and Respect Steering Group, and the West Midlands Combined Authority Skills Board as well as Chairing the WMCA Construction Skills Taskforce

Agenda

Social and Economic Impact of Infrastructure Projects



01

A Prosperous Wales

What does the Balfour Beatty approach mean for Wales

02

A More Equal Wales

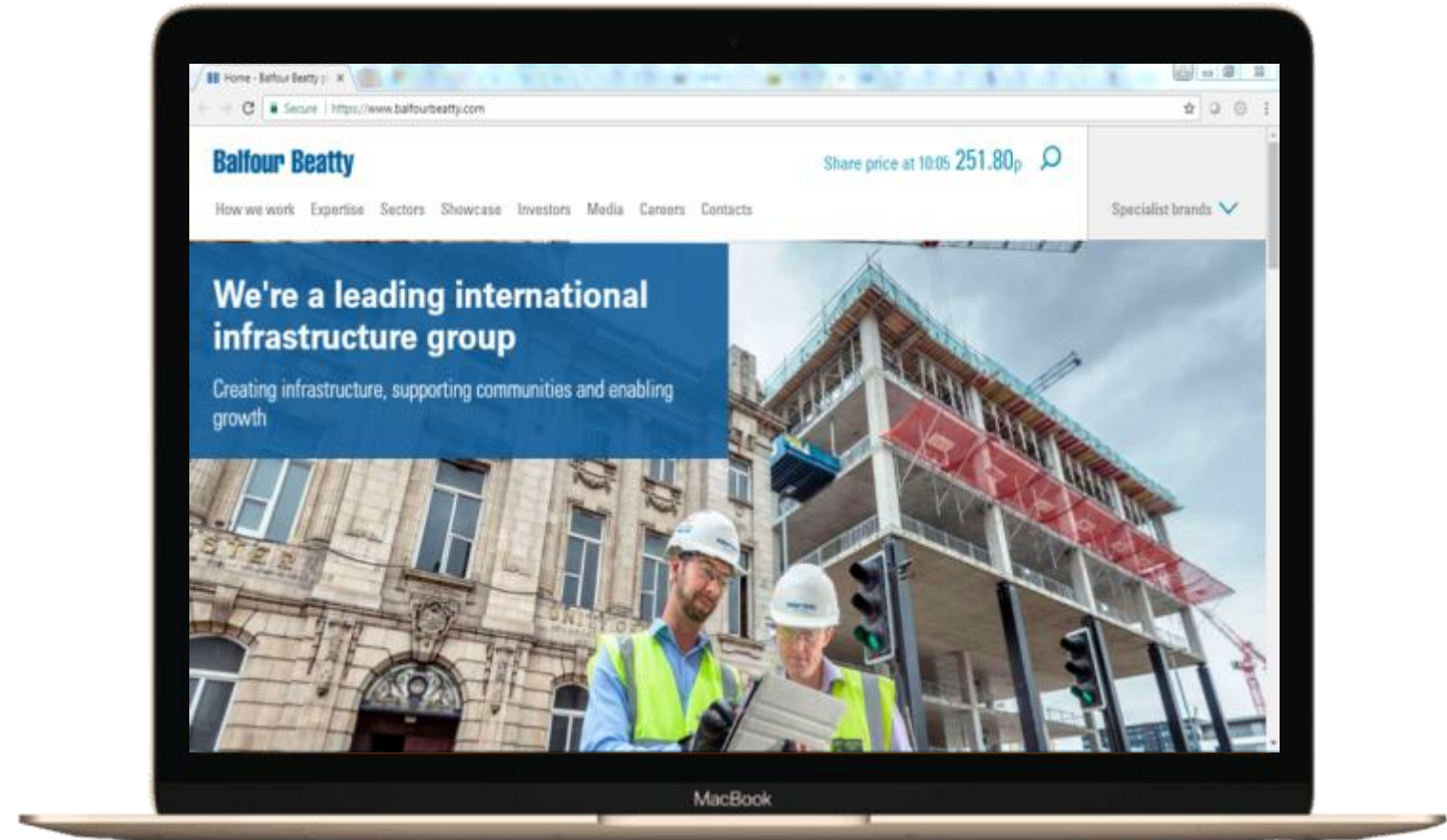
Addressing the skills shortage for the construction industry

03

A Collaborative Approach

The need to collaborate and develop new models to deliver a prosperous future for Wales

What we do



What we do



A Prosperous Wales



Consideration of Future Generations

Pen Y Cymoedd Wind Energy Project

- Generates electricity for 188,000 homes
- Employed over 200 people at peak inc.13 apprentices
- 70% of labour was recruited from within 35miles of the site.
- Alternative foundation saved £1.4 million
- Engaged with 600 school pupils and local residents
- Site workers also carried out maintenance work at Penpych and Cwmbach Community Primary Schools.
- £5m Social Value Delivered

Burbo Bank Substation (St. Asaph)

Total Spend	£8.7m
SME Spend	£5.1m (57.8%)
<i>Micro</i>	£2.9m (33.3%)
<i>Small</i>	£1.2m (13.6%)
<i>Medium</i>	£1.02m (11.8%)
WO Spend	£271.1k (3.1%)
Local Spend (40 miles)	£2.8m (31.7)

Colwyn Bay, Flood Protection

Recreating the beach has also reinvigorated Colwyn Bay's relationship with the sea. It is a Blue Flag bathing beach used all year round by visitors and locals. Land reclaimed as part of the protection work houses a community-operated water sports facility and a restaurant with a fantastic view, run by celebrity chef Bryn Williams.

What has been created is so much more than flood protection or a new beach. It is a new future for Colwyn Bay.

ProjectName	Contract Value	Actual Social Value
CRWT0536 - Audley Coopers Hill		£0
AVTM Guided Busway	£32,328,287	£8,688,446
Springhead Bridge	£13,988,880	£0
Scape Amersham Multistorey Carpark		£0
Pen y Cymoedd Wind Farm	£56,000,000	£5,114,636
A355 Beaconsfield		£0
Southsea Coastal Scheme	£100,870,436	£30,312,669
Southsea Coastal Scheme	£100,870,436	£35,132,840
Sproughton Enterprise Park		£0
Warwickshire, Coventry, Solihull Highways/Civ Eng Works (2015)	£41,623,832	£32,827,335
Northern Estate Programme		£0
Baron's Quay	£49,000,000	£29,806,951
Warrington West Station		£0
Burtonwood Road South Widening	£2,196,846	£0
Warrington East Phase 2	£7,500,000	£3,599,248
Warrington West Station		£0
Victory Road Realignment	£6,450,000	£3,793,833
SCAPE Framework - Silver Jubilee Bridge Upper Arch Painting Work		£0
CRMMS002 - Windle Island Junction Improvements		£0
North West Construction Hub - St Ambrose School	£22,500,000	£12,075,732
Warrington A574	£4,400,000	£5,687,734
Tadcaster Bridge		£817,537
Warrington East Phase 2	£7,500,000	£2,891,783
Victory Road Realignment	£5,833,045	£3,960,184
Forth Valley College	£58,000,000	£6,259,304
Scape - Edinburgh North Bridge Refurbishment		£0
Gobbins Coastal Path		£1,075,178
Edinburgh Gateway		£4,151,124
Third Don Crossing		£3,080,004
Harewood Drive and Greendykes Culvert		£176,536
Inveramsay Bridge		£358,633
SCAPE/Dundee Flood Protection & Dundee Railway Station	£29,353,498	£25,533,552
Glenrothes District Heating		£0
Dundee Regional Performance Centre for Sport		£0
Crieff Road	£35,285,420	£19,644,827
Almondbank Flood Prevention Scheme	£7,353,251	£2,506,002
Crieff Road	£30,778,566	£12,950,483
M3 Summary	£488,597,642	£173,191,002
Balfour Beatty Exemplar	£33,333,333	£18,000,989
BB_SupplyChainDemo	£1,100,000	£63,522
Balfour Beatty Exemplar	£4,564	£46,955
BB_SupplyChainDemo		£0
BB_SupplyChainDemo	£900,000	£53,710
BB_WestSussex	£28,070,474	£0
BB_WestSussex	£45,000,000	£20,430,166



ACCOUNT SUMMARY

Total Committed Social Value:

£108,112,436.00

Total Delivered Social Value:

£467,280,270.97

Delivered Social Value Add(%):

38.07%

Progress Against Targets(%):

432.22%

Local Business and
Economy

£66.5M



Skills and
Local
Employment

£9.9M

NATIONAL TOMs FRAMEWORK 2018

for social value measurement

Guidance

PREFACE
By, Hans Haert Beatty and Chris White
FOREWORD
Terry Brown, Chairman of National Social Value Taskforce
INTRODUCTION
Gus Butler



5.3% staff in
'earn and learn'
positions
[£7.6m in social
value]



18 male and
female serving
prisoners given
work experience



980 staff and
suppliers trained
in Mental Health
1st Aid



4,000+ young
people supported
through Building
Better Futures



89% waste
diverted from
landfill
[£73.9m in social
value]



5,502
volunteering
hours



£358,000 donated
to national youth
charities



24% reduction in
CO2e emissions
[£1.9m in social
value]

Total Supply Chain Spend: Impact

2013 - 2017 Spend Data



£16.6bn

Total Spend



£7.4bn

SME Spend



£4.7bn

Small & Micro



£253m

Woman Owned
Businesses



£11.4m

Social
Enterprises



Verified by

dun & bradstreet

Balfour Beatty

Supply Chain Spend: Wales

2014 - 2017 Spend Data



£210m

Total Spend



£131m

SME Spend



£91.8m

Small & Micro



£1.98m

Woman Owned
Businesses



£84.5k

Social
Enterprises

Wales 2017 Spend Data



£47.8m

Total Spend



£27.3m

SME Spend



£17.4m

Small & Micro



£286k

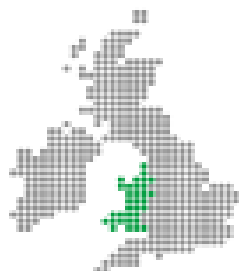
Woman Owned
Businesses



£27.2k

Social
Enterprises

Targeted Action Delivering Inclusive Growth



Total spend in **Wales** of

£47.8m

Spend in deprived areas of


£3.9m

(8.2%)

Spend with SMEs
in deprived areas of

£1.74m

(3.6%)



The Power of Procurement

We recognise the **critical role of our supply chain** in helping to improve sustainability outcomes for our business and our customers

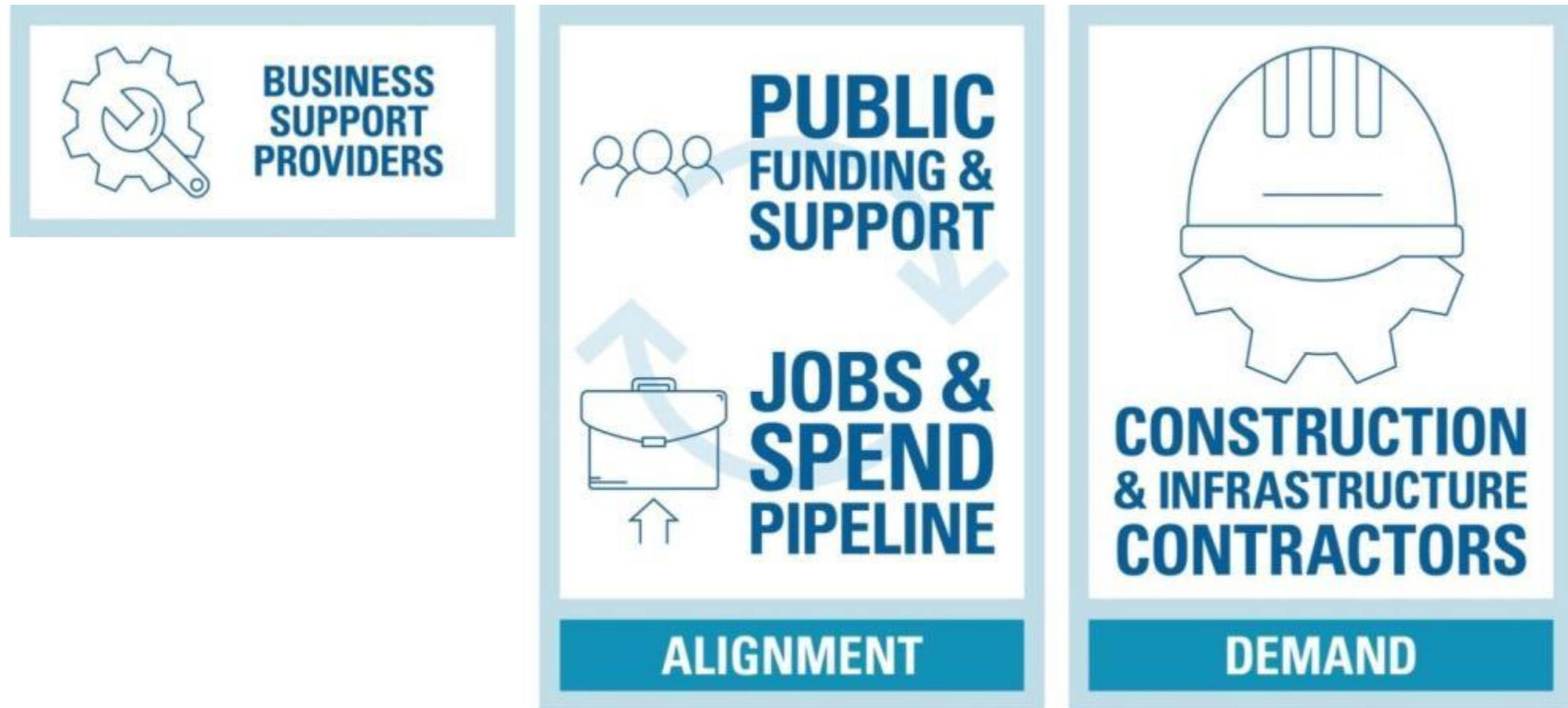
Chris Johnson

The SME Dichotomy

- Majority of construction projects delivered by Supply Chain
- Majority of Supply Chain are SMEs
- SME have the best opportunity to deliver diversity, inclusive growth and social value
- However SME aren't sufficiently supported or incentivised to make the decisions and take action that will deliver maximum economic impact



Joined Up Approach and New Models



The Need to Collaborate



75 Partners



Innovation



Innovation

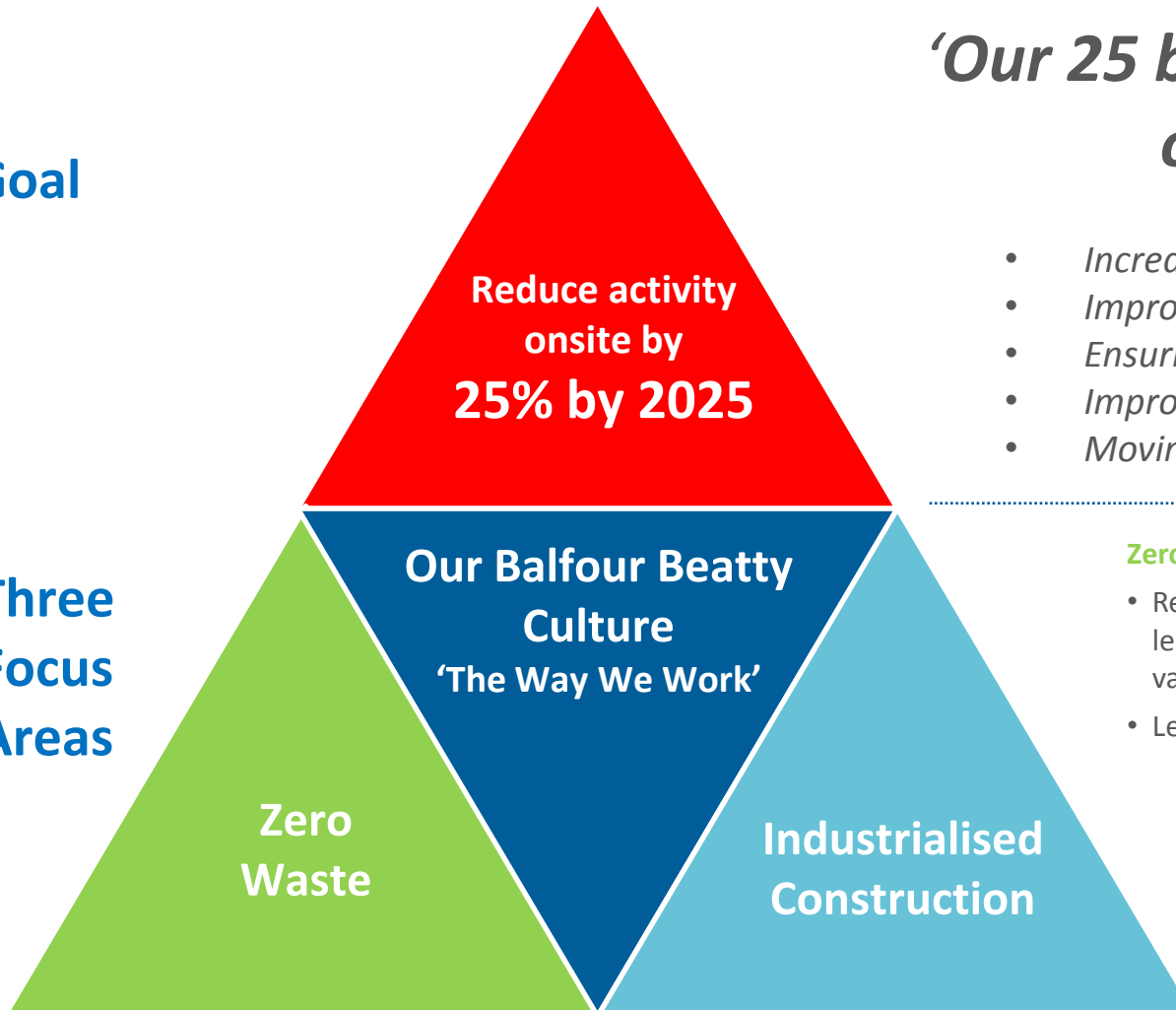


Goal

‘Our 25 by 2025 strategy aims to reduce activity onsite by 25% by the year 2025’

- *Increasing productivity*
- *Improving quality and safety*
- *Ensuring value for our customers*
- *Improving project and programme delivery*
- *Moving away from wasteful and traditional industry approaches*

Three Focus Areas



Zero Waste

- Removing waste through lean thinking and adding value
- Lean Training for everyone

The Way we Work

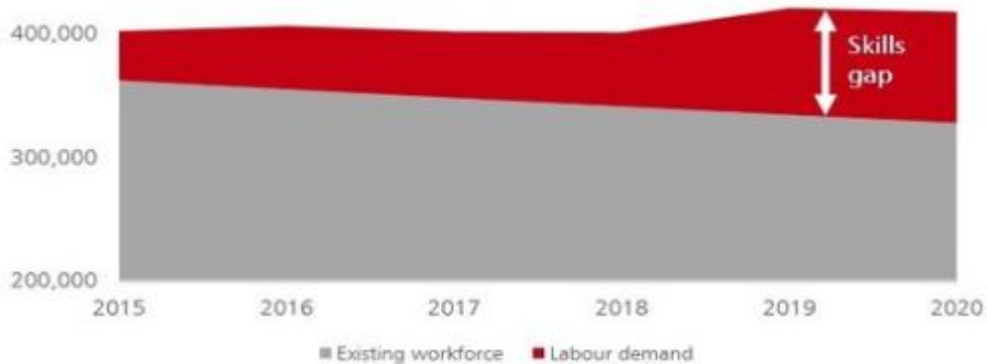
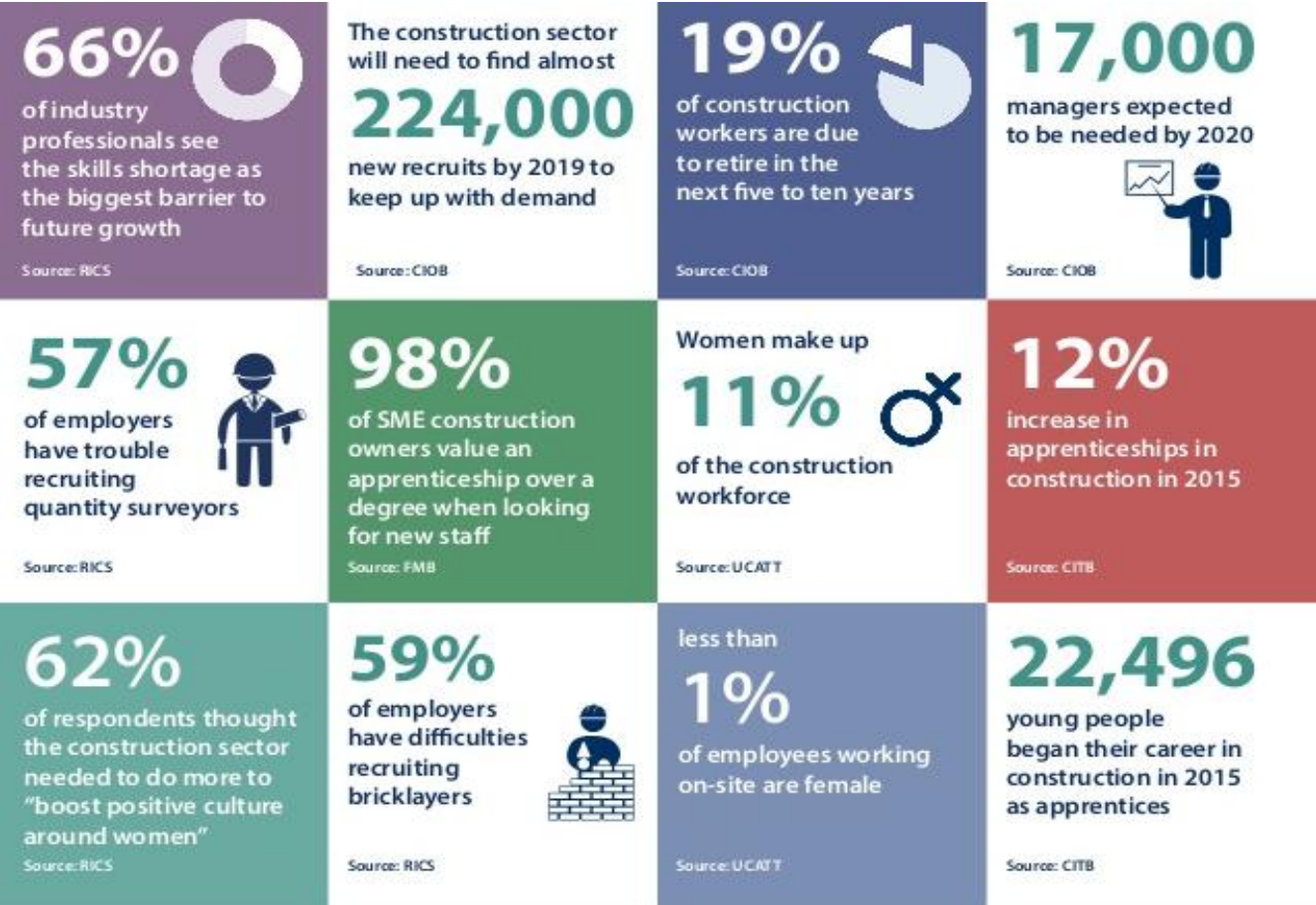
- Developing standard tools, systems, measurement and ways of reporting
- Knowledge Transfer of innovation, best and standard practice

Industrialised Construction

- Maximising the use of:
- Off-site and On Site Manufacturing
 - Adopting Innovation and technology
 - Mechanising processes
 - Assembling standard products

A More Equal Wales

Opportunities For All



A collage of diverse Balfour Beatty employees in various work settings, overlaid with the text "Perception v's Reality". The collage includes portraits of people in business attire, hard hats, and safety vests, as well as images of construction sites and a group holding a "Balfour Beatty LGBT GROUP" sign. The text is arranged in a grid-like fashion around the central "v's".

Who

Perception

Would

v's

Work

In a

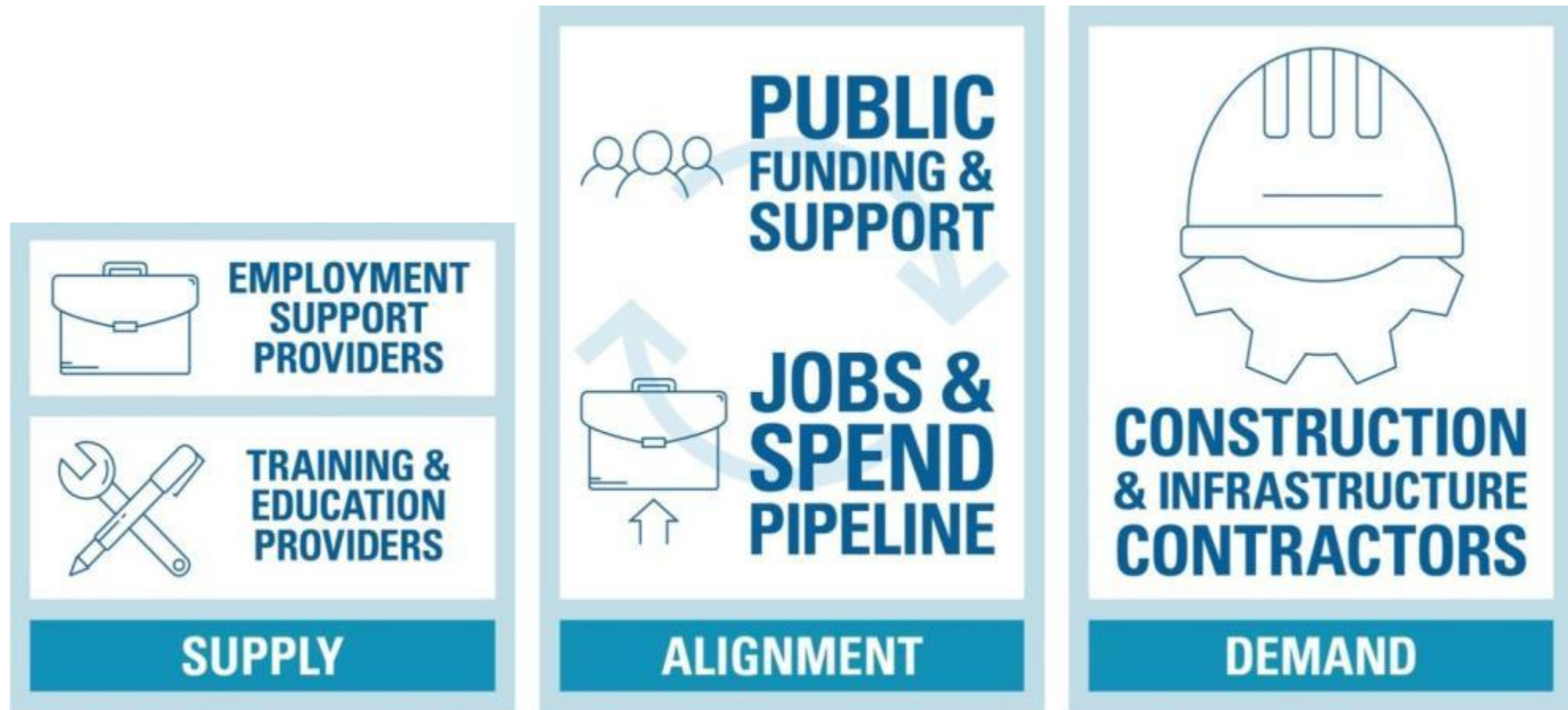
Reality

Place

Like

This

Joined Up Approach and New Models



Thank
you