



# SPL POWERLINES

AN EQUANS COMPANY

Scotland's Leading Rail Electrification Provider





# 1

## COMPANY UPDATE

MARTIN HAWLEY

Managing Director, SPL Powerlines

# SPL Powerlines - Who are we?



## SPL POWERLINES

01

A Scottish based company, headquartered in Coatbridge & located throughout the UK

## PART OF ONE OF THE WORLDS LARGEST PUBLIC COMPANIES

03

A member of the Powerlines Group of Companies based out of Vienna which is part of the Equans / Bouygues Group

## DELIVERED OVER £600M

05

Delivered over £600m of New Rail Electrification across UK since 2014

02

## FORMED IN 2012

To meet the growing demand of new Rail Electrification across the UK

04

## AWARDED NATIONAL ELECTRIFICATION PROGRAMME

Awarded the National Electrification Programme - Framework in 2014 - Two Regions Scotland & Eastern

06

## UK MARKET LEADER

UK Market Leader in Rail Catenary / Power & Distribution Systems

# SPL Powerlines – Group Overview

**BOUYGUES** €50bn turnover 200,000 employees 80 countries 6 business segments

**EQUANS** EMPOWERING TRANSITIONS €17bn turnover 100,000 employees 20 countries covered 60% business is international

**EQUANS** EMPOWERING TRANSITIONS FRANCE €5bn turnover 27,000 employees 4 markets

**Specialities**  
 Energy infrastructures  
**Transport**  
 Defence & Marine  
 Process industries

**Cooling & Fire protection**  
 Refrigeration  
 Fire protection  
 Photovoltaic

**Smart Building**  
 Tertiary  
 Local industry

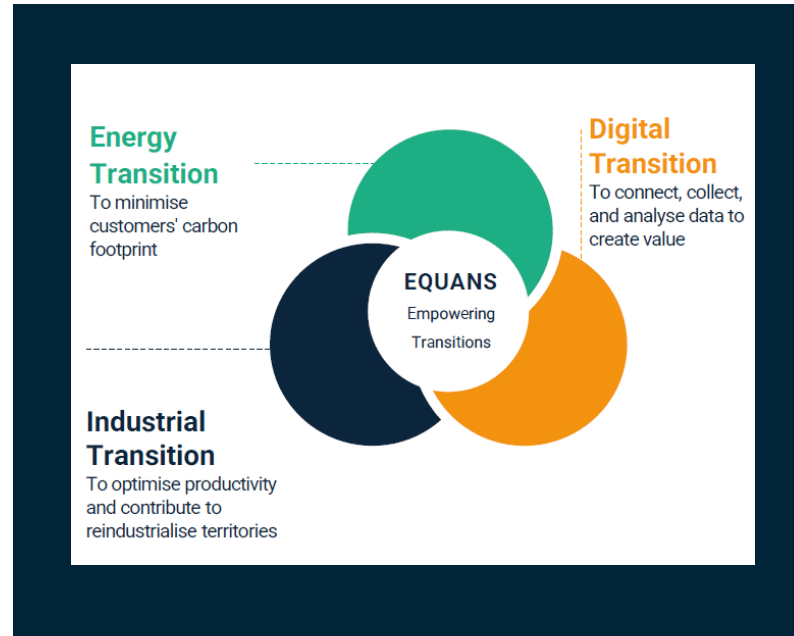
**Connected cities & territories**  
 Video protection  
 Public lighting  
 Networks

# EQUANS

Equans is a Bouygues group company and the world leader in technical services.

Equans designs and provides customized solutions to improve our customers' buildings, technical equipment, systems and processes to support them in optimizing their use.

Equans aims to combine its skills and knowledge to deliver the Energy, Industrial and Digital Transitions required by our customers in the forthcoming decade.

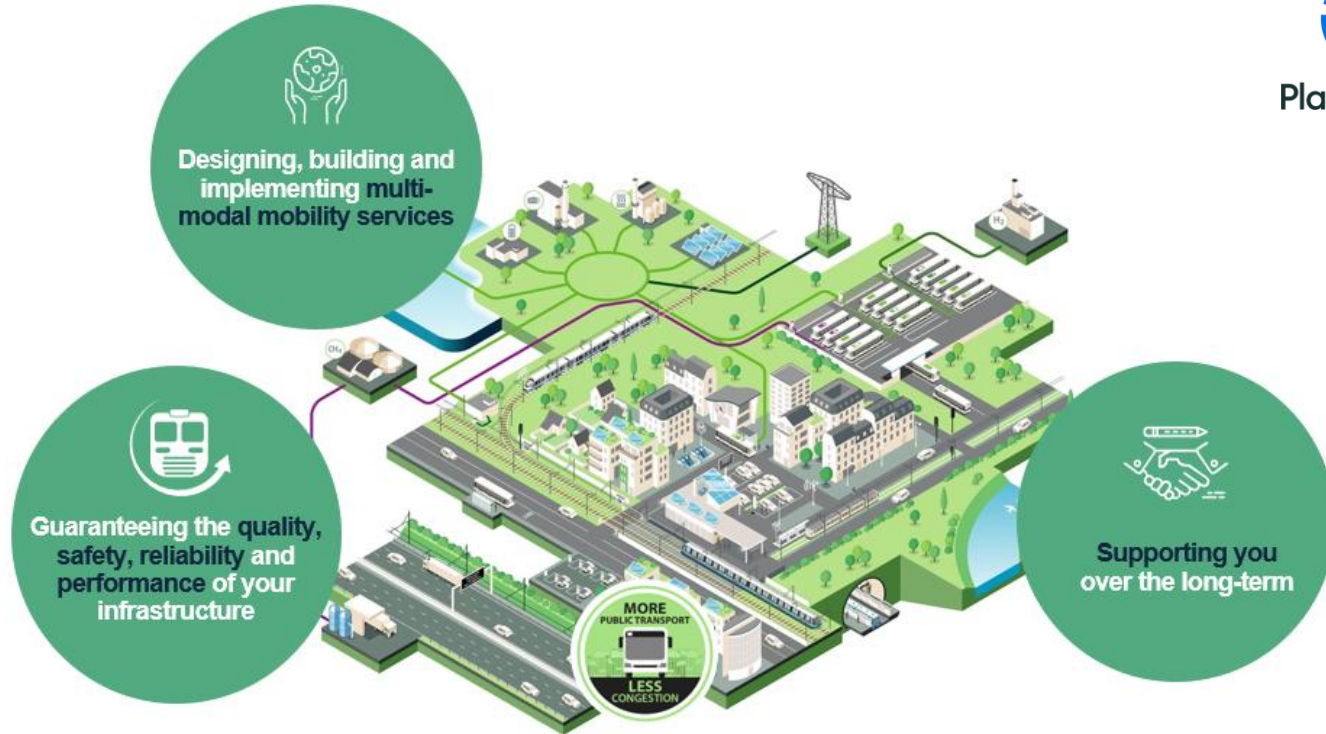


# Equans Transport: harnessing our expertise for greener mobility

Delivering the most reliable, sustainable & attractive public transport solutions



PlanetMark





# 2

PART OF SCOTLAND'S RAILWAY  
- SPL Powerlines journey to date  
**One Team. One Goal. One Vision.**

# SPL Powerlines - journey to date

## Key points – Delivering Successfully

- A Safe Delivery Culture at the heart of everything we do – Take 60 Seconds
- Significant experience in successfully Designing & Delivering Master Series / Series II across multiple Projects / Regions
- To continue to challenge the norms to drive Innovation & Industry Savings
- A Proven, Efficient Delivery Model across Scotland's Railway
- The Lowest OCS STK Rate across the UK
- First Class Technical & Delivery Capability all based in Scotland
- Largest Employer of OLEC Competent Operatives in the Region



# SPL Powerlines - journey to date

Key points – Delivering Successfully



Safe Delivery



Efficient Delivery Model



Design and Delivery



Technical Capability



# SPL Powerlines - journey to date

## Key points – Innovation in Delivery

- Successful Implementation of New & Effective Automated Design Tools & Technologies
- Embedding Digital Assurance Software that provides a Robust Record through the Lifecycle of Projects
- Implementation of Digital Delivery - Resulting in Greater Possession & Access Availability
- Investment in High Output Plant – Zeck Wiring Systems
- Culminating in the First wire runs of the current Rolling Programme of Decarbonisation Successfully Installed, On Time & On Budget



# 3

## **DELIVERING FOR SCOTLAND'S RAILWAY - CP7 & BEYOND**

**Together – Better in the making**

# Delivering for Scotland's Railway in CP7 &

## key points – What do we need to help achieve Net Zero targets

- Embrace the Scottish Ministers' High Level Output Specification (HLOS), which puts Rail Electrification as a Key Delivery Driver
- Committed Financing of a Rolling Programme of Electrification, creating continuous Work Banks & the ability to Develop Scottish based Resources
- European Efficiencies Achieved Delivering a 10-year Programme Commissioning over 1300STK
- Embrace Integrated Delivery Models – Collaboration through Committed Frameworks
- Enhanced Supply Chain Engagement that recognises the Value of SME's & Local Suppliers
- Continued Investment in Innovation & Skills



# SPL POWERLINES

AN EQUANS COMPANY

